

# R-D Rapid Disinfector Quick Start Guide

**MAIN UNIT READY- PLUGGED IN AND BOTH RED AND GREEN LIGHTS IN STORAGE COMPARTMENT ARE ON.**

- **RED LIGHT NOT ON** - Confirm BOTH WHITE CIRCUIT BREAKERS located inside the storage compartment are pressed in; THEN, IF STILL NOT ON check the electrical outlet to confirm it is energized or try a different outlet.
- **GREEN LIGHT NOT ON** - PRESS AND RELEASE BLACK PUSHBUTTON to “turn on” the System Computer. THEN, IF STILL NOT ON Confirm BOTH WHITE CIRCUIT BREAKERS located inside the storage compartment are pressed in.
- **RESET SYSTEM** - PRESS and hold the BLACK PUSHBUTTON for about 10 seconds until the GREEN light turns off. THEN WAIT 10 seconds and press and release the BLACK PUSHBUTTON again and the GREEN light should turn on.



**1** Power on the Samsung Galaxy



**2** The following login screen should appear. Enter user name and password.

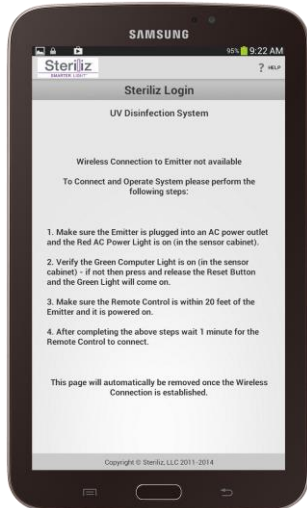
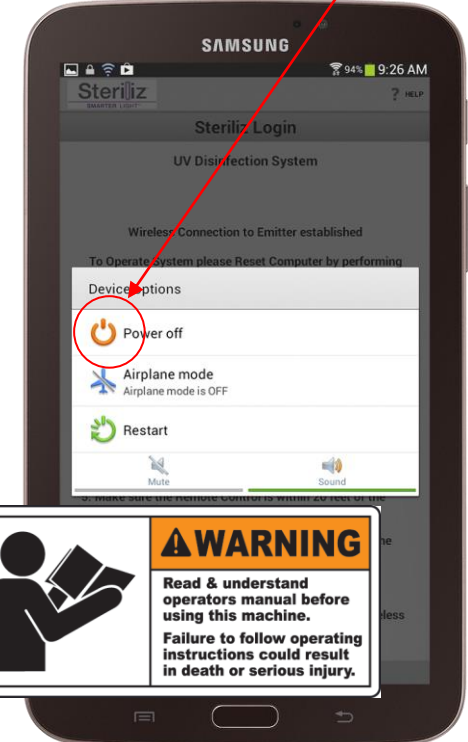


**3** Room Disinfection: Begin setup and operation per training and the operating manual.

The complete operating manual can be found within your portal under the help section.



**5** After all disinfection jobs are complete, press and hold the power button until the screen below is shown & select “Power Off”. Always make sure the hand held & R-D are charging when not in use.



The following screen will appear if the R-D Emitter is off or the Samsung Galaxy is too far away from the Emitter.

