

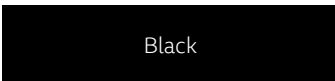
# ERGOTRON®

## Elevate, Electric Sit-Stand Desk

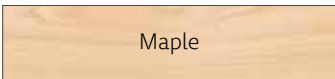


### Highlights

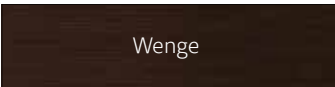
- Work sitting or standing so you're comfortable and productive all day long with Elevate, electric powered sit-stand desk.
- Strong electric legs lift 150 lbs (68 kg) of distributed weight.
- Available in two widths: 48" and 60" (122 and 152 cm) to fit your equipment and your space.
- Sophisticated laminate finishes come in 3 choices:



Black

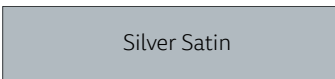


Maple



Wenge

- Metal surfaces are Silver Satin:



Silver Satin



***Elevate, an electric powered sit-stand desk, joins Ergotron's line-up of adjustable-height tables that move from sitting to standing height***

Available in a range of finishes and sizes, Elevate keeps you moving throughout the day so you're energized and productive.



Adjust the main worksurface 28" - 47" high (71 cm - 119 cm) with the simple push of a button.



The 6.5" h (16.5 cm) cable tray is deep enough to hold all your power bricks and cord bundles.



Waterfall edges are comfortable against forearms and wrists.



**Tilt-and-go** rear wheels help you easily move the table for cleaning or accessing the cable tray.



Switch from sitting to standing with a simple push of a button.



"Tilt-and-go" wheels at the back of each foot make it easy to move the table when you need to rearrange your space or access the back of your equipment. Just lift the front of the worksurface and roll the table into place.



Contoured laminate worksurface with smooth edges is comfortable against your arms when typing.



Strong electric legs lift 150 lbs. (68 kg) of distributed weight easily and quietly at about 1.5" (3.8 cm) per second and move all your equipment up and down with the desk.



The open architecture frees up space for a treadmill and other equipment.



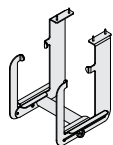
	Elevate 48, Electric Sit-Stand Desk 48" (122 cm) wide	Elevate 60, Electric Sit-Stand Desk 60" (152 cm) wide
<b>Part Numbers</b>	MVBD48SSBK (in Black) MVBD48SS/MP (in Maple) MVBD48SS/WE (in Wenge) US/CA/MX	MVBD60SSBK (in Black) MVBD60SS/MP (in Maple) MVBD60SS/WE (in Wenge) US/CA/MX
<b>Product Includes</b>	Comes with single worksurface, cable tray, control box and keypad for electric height adjustment, two electric lift legs and two feet with tilt-and-go back wheels.	
<b>Product Dimensions</b>		
<b>Sit/Stand Height Range</b>		
<b>Materials and Finishes</b>	Tops are 1" (2.54 cm) thick medium-density fiberboard wrapped in highly durable thermoplastic laminate that resists cracking and chipping and stands up to a wide range of chemicals. Metal components are 12 gauge steel with baked-on power coat finish.	
<b>Cable Management</b>	A 6.5" h (16.5 cm) rear cable tray runs the width of the desk — deep enough to hold all your power bricks and cord bundles, plus an optional power strip.	
<b>Mobility</b>	Lift the front of the worksurface to tilt the desk and easily move it on the tilt-and-go rear wheels.	
<b>Max Lift Capacity</b>	150 lbs. (68 kg)	
<b>Weight Capacity</b>	150 lbs. (68 kg)	
<b>Desk Weight</b>	109 lbs. (49.44 kg)	126 lbs. (57.15 kg)
<b>Shipping Weight</b>	124 lbs. (56.25 kg)	141 lbs. (63.96 kg)
<b>Shipping Dimensions</b>	33" W x 7" H x 51" D (83.8 x 17.8 x 129.5 cm)	33" W x 7" H x 63" D (83.8 x 17.8 x 160 cm)
<b>Certification</b>	ETL-listed to UL Standard 692 for US and Canada	
<b>Warranty</b>	Lifetime against manufacturing defects on the desk surfaces. 5 years on legs and electrical system. Cords, cables, and plugs not warranted.	



The 30-year legacy of Anthro Corporation lives on in its world-class factory, flexible award-winning designs, and market-leading personal customer service. When you see Anthro-DNA, it signifies quality manufacturing and technology leadership.

## Elevate accessories

### CPU SideRack



- Attaches to the outside edge of your desk with four screws. Installs left or right.
- Slide the arms open to insert your CPU, then tighten down to keep it in place. Measure the width of your CPU and add 3" (7.6 cm) to determine how far the SideRack will extend from the side of your desk.
- Supports CPUs 4.5"-9.75" (4.5 - 24.8 cm) wide. Holds up to 40 lbs (18.14kg).
- Comes in Grey Metallic.

Grey Metallic

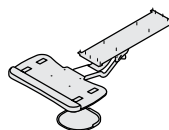
Product	Width	Depth	Height	Weight	Part #
CPU SideRack	6.25" (15.9 cm)	11.5" (29.2 cm)	14.5" (36.8 cm)	12 lbs. (5.44 kg)	STSR2GM



**Need to mount your monitor? Use Ergotron Quick Finder!**

Visit [finder.ergotron.com](http://finder.ergotron.com) to find the perfect product for your computer monitor, TV, laptop or tablet.

### Keyboard and Mouse Caddy



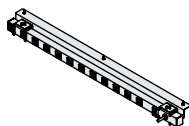
- Caddy moves in and out, up and down from even with your work surface to 6" (15.2 cm) below, tilts 15° positive and 15° negative, and swivels 360°.
- Swing-out mouse surface pivots out when it's needed and hides away when it's not.
- Made of steel and phenolic with an integrated foam wrist rest.
- Surfaces are dark grey granite color.
- Requires 18.5" (47 cm) mounting depth. Drill required for installation.

Black

Product	Width	Depth	Weight	Part #
Keyboard and Mouse Caddy	19.5" (49.5 cm)	8" (20.3 cm)	11 lbs. (5 kg)	UKMCKBK

### Power solutions


#### Power Bar



- Rated at 15 amps, 120 Volts. 2" (5 cm) spacing allows AC/DC adapters at each receptacle.
- Comes with 12' (366 cm) cord, on/off switch, on/off indicator light, and circuit breaker reset button.
- Slides into the cable tray.
- Available in Silver Metallic.

Silver Metallic

Product	Width	Depth	Height	Weight	Part #
12 Receptacles	36" (91.4 cm)	2" (5 cm)	3" (7.6 cm)	8 lbs. (3.63 kg)	PBA12SM

 Power Bar does not provide surge protection.

#### Surge Protector



- This UL-listed surge suppressor is 12" (30.5 cm) long, has 6 outlets and is rated at 15 amps, 120 Volts. Comes with on/off switch, on/off indicator light, 15' (457 cm) power cord and circuit breaker reset button.
- Comes in Black and attaches under a shelf with integrated mounting hardware or slips into the cable tray.

Product	Cord Length	Depth	Weight	Part #
Surge Protector - Standard	15' (457 cm)	2.5" (6.4 cm)	2 lbs. (1 kg)	520BK

© 2016 Ergotron, Inc. rev. 09/20/2016 Literature made in the U.S.A.  
**Content is subject to change without notification**

#### Americas Sales and Corporate Headquarters

St. Paul, MN USA  
 (800) 888-8458  
 +1-651-681-7600  
[www.ergotron.com](http://www.ergotron.com)  
[sales@ergotron.com](mailto:sales@ergotron.com)

#### EMEA Sales

Amersfoort, The Netherlands  
 +31 33 45 45 600  
[www.ergotron.com](http://www.ergotron.com)  
[info.eu@ergotron.com](mailto:info.eu@ergotron.com)

#### APAC Sales

Tokyo, Japan  
[www.ergotron.com](http://www.ergotron.com)  
[apaccustomerservice@ergotron.com](mailto:apaccustomerservice@ergotron.com)

#### Worldwide OEM Sales

[www.ergotron.com](http://www.ergotron.com)  
[info.oem@ergotron.com](mailto:info.oem@ergotron.com)

**ERGOTRON®**